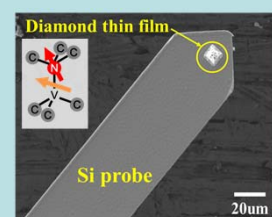
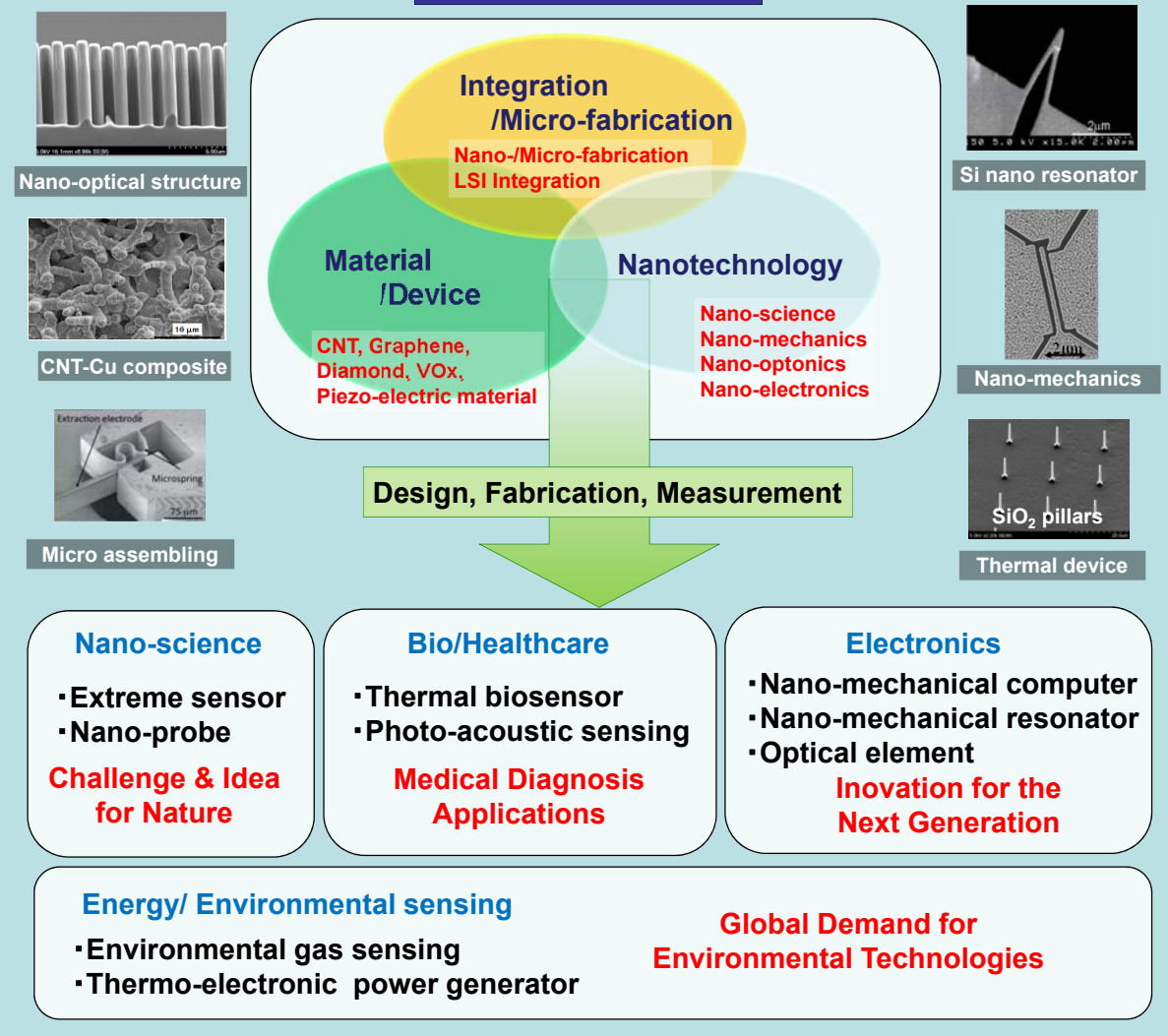
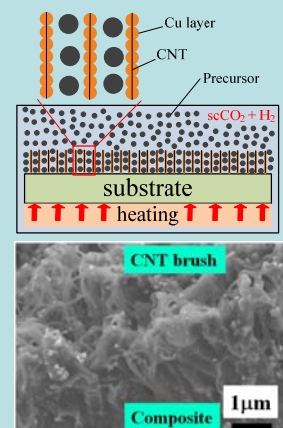


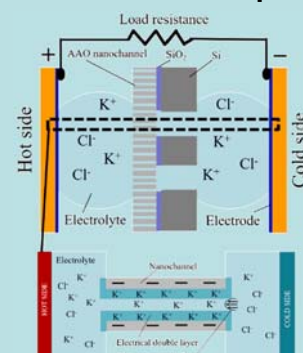
Research outline



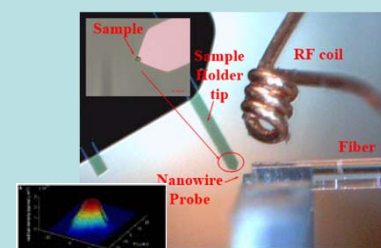
Diamond Probe with NV Center



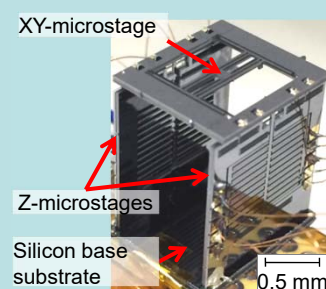
Nano-carbon Composite



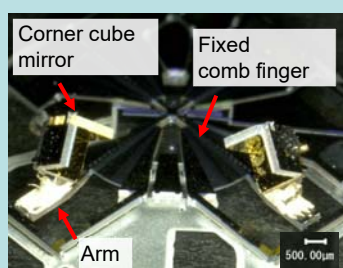
Thermoelectric power battery



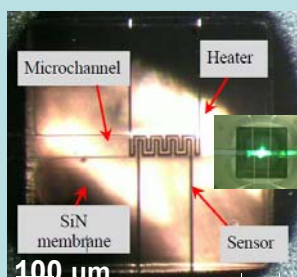
Magnetic resonance force microscopy (MRFM)



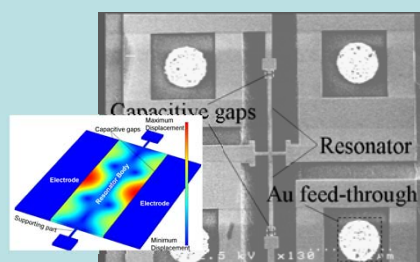
Assembled 3D scanner for LT measurement



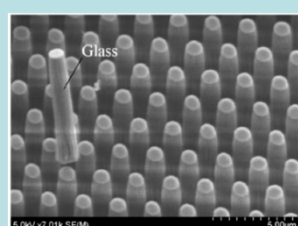
Miniature Interferometer for FT-IR



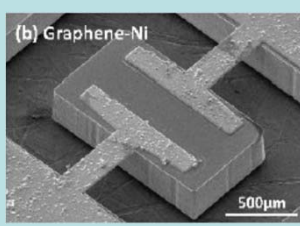
Calorimetry device for protein sensor



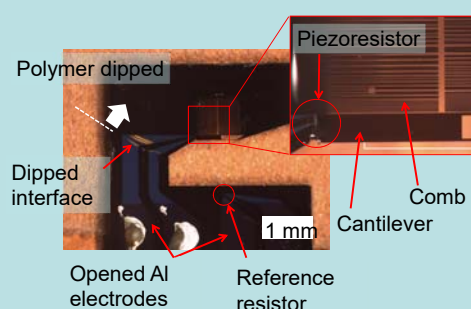
Si resonator timing device



Glass micro-machining



Graphene-Nickel composite device



Polymer dipped piezoresistive gas sensor for IoT device

We are recruiting graduate students widely.
If you would like the tour or other queries,
please feel free to contact Professor Ono.
takahito.ono.d4@tohoku.ac.jp