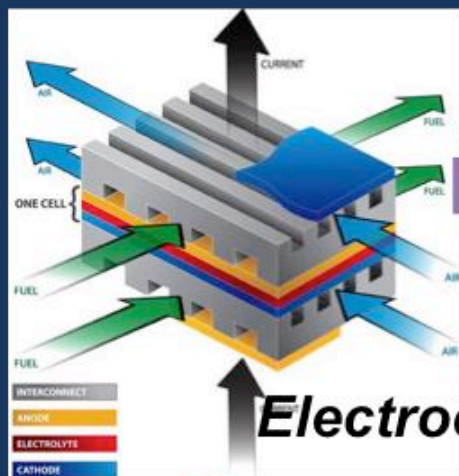


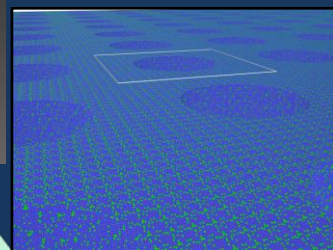
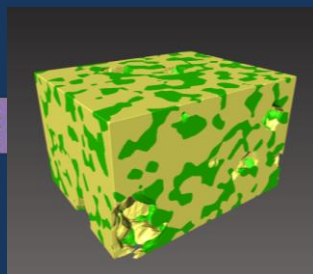


More information may be provided using a TV conference system.  
Contact us at the address below:  
hashida-web@rift.mech.tohoku.ac.jp

Professor Toshiyuki HASHIDA    Associate Professor Kazuhisa SATO    Assistant Professor Fumio OGAWA



**GENERATE**



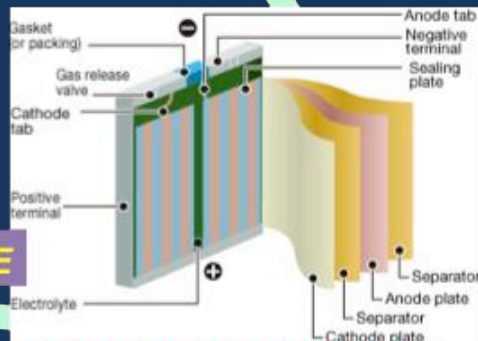
## Electrochemical devices

**FUEL CELLS**  
(PEFC, SOFC, MCFC etc...)

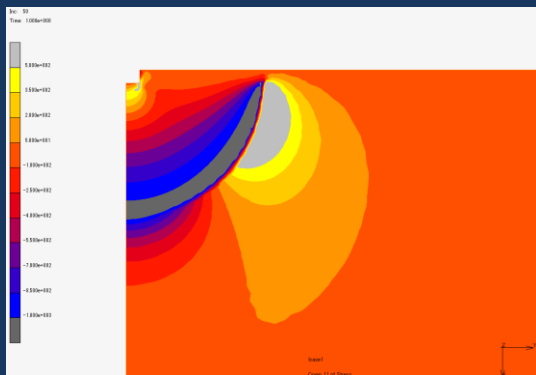


## Solid State Electrochemical devices

**STORAGE**



**SECONDARY BATTERIES**  
(Lithium Ion, etc...)



We perform researches on Mechanics of materials, Fracture Mechanics, Material Science, and Electrochemistry.

### Applications:

- Solid Oxide Fuel Cells
- Lithium Ion Batteries