

Soyama Lab.



Intelligent Sensing of Materials
Cavitation Technology

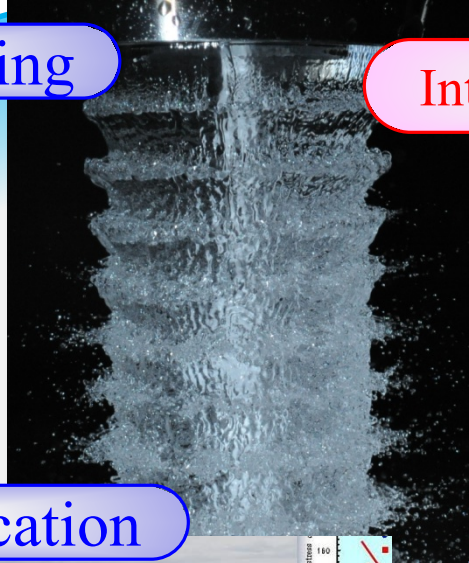


Surface processing

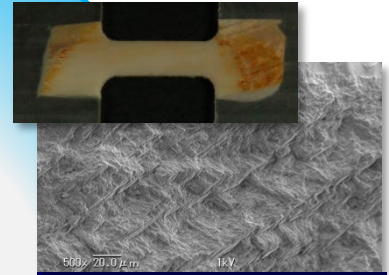


飛行機の翼の成形

Forming main wing

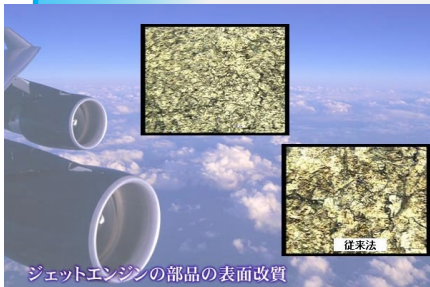


Intelligent Sensing



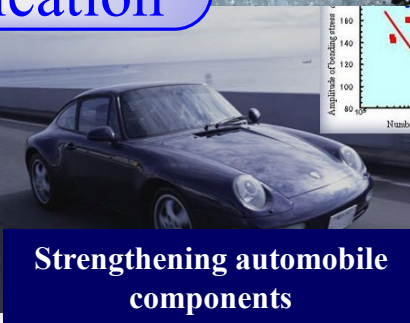
Bio mineralization

Surface modification



ジェットエンジンの部品の表面改質

Strengthening jet engine



Strengthening automobile components



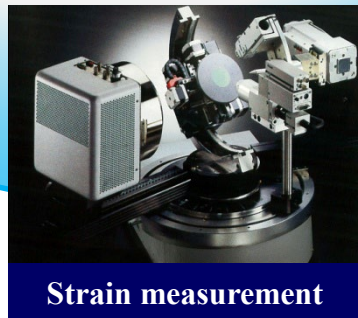
Callous nano-fiber

◇ Strengthening ◇

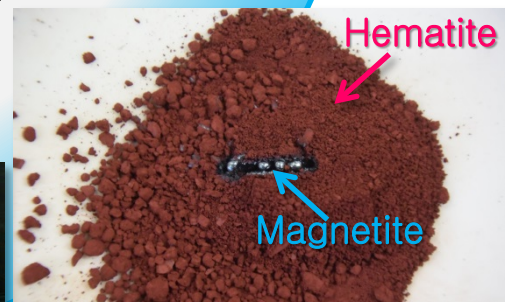
◇ Sensing ◇



Laser-induced cavitation



Strain measurement



Laser-induced reduction of Hematite



<https://youtu.be/BurRGrmOGQY>

Tel : 022-795-6899

soyama # mm.mech.tohoku.ac.jp (Prof. Soyama)
(please change # to @)