

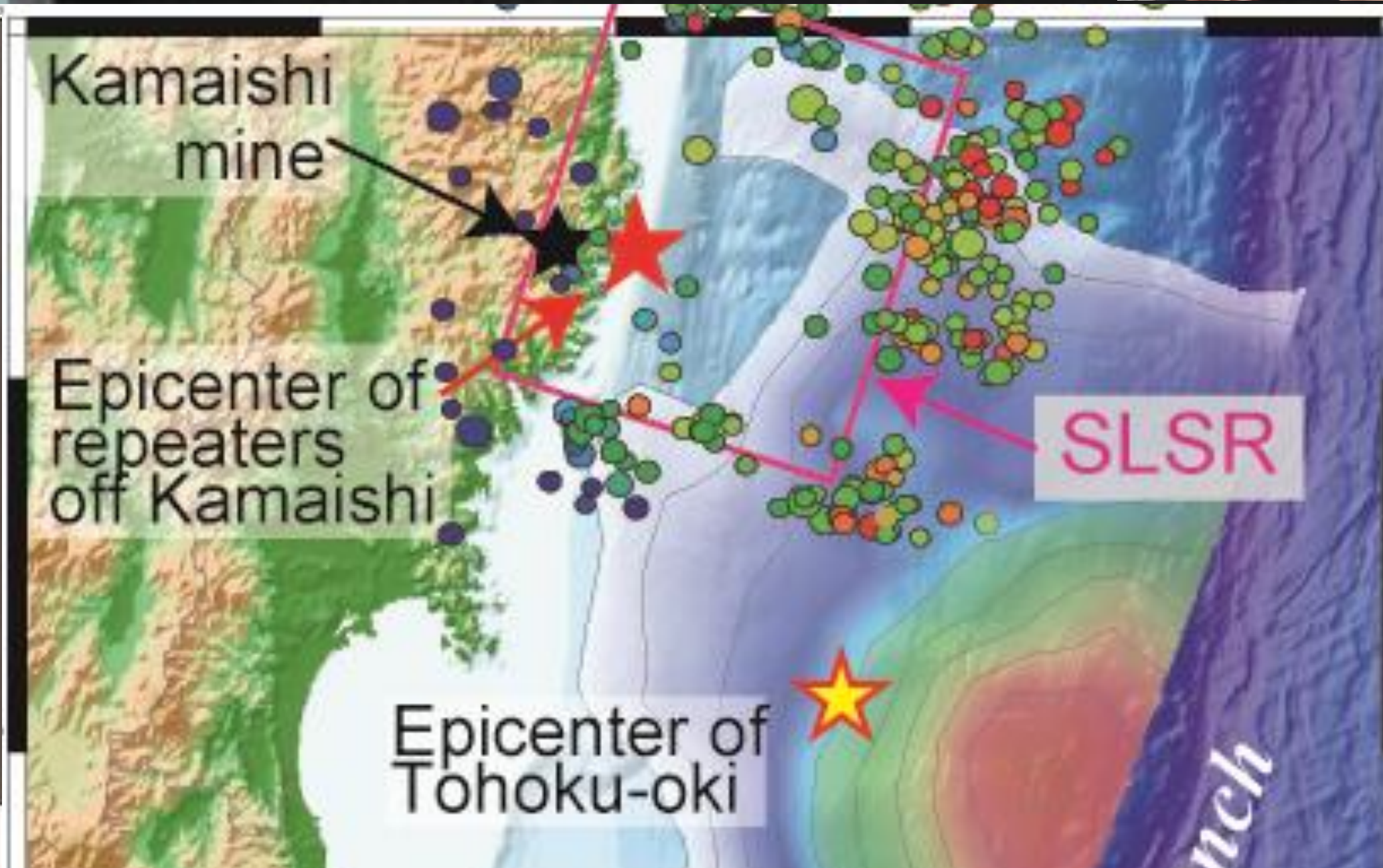
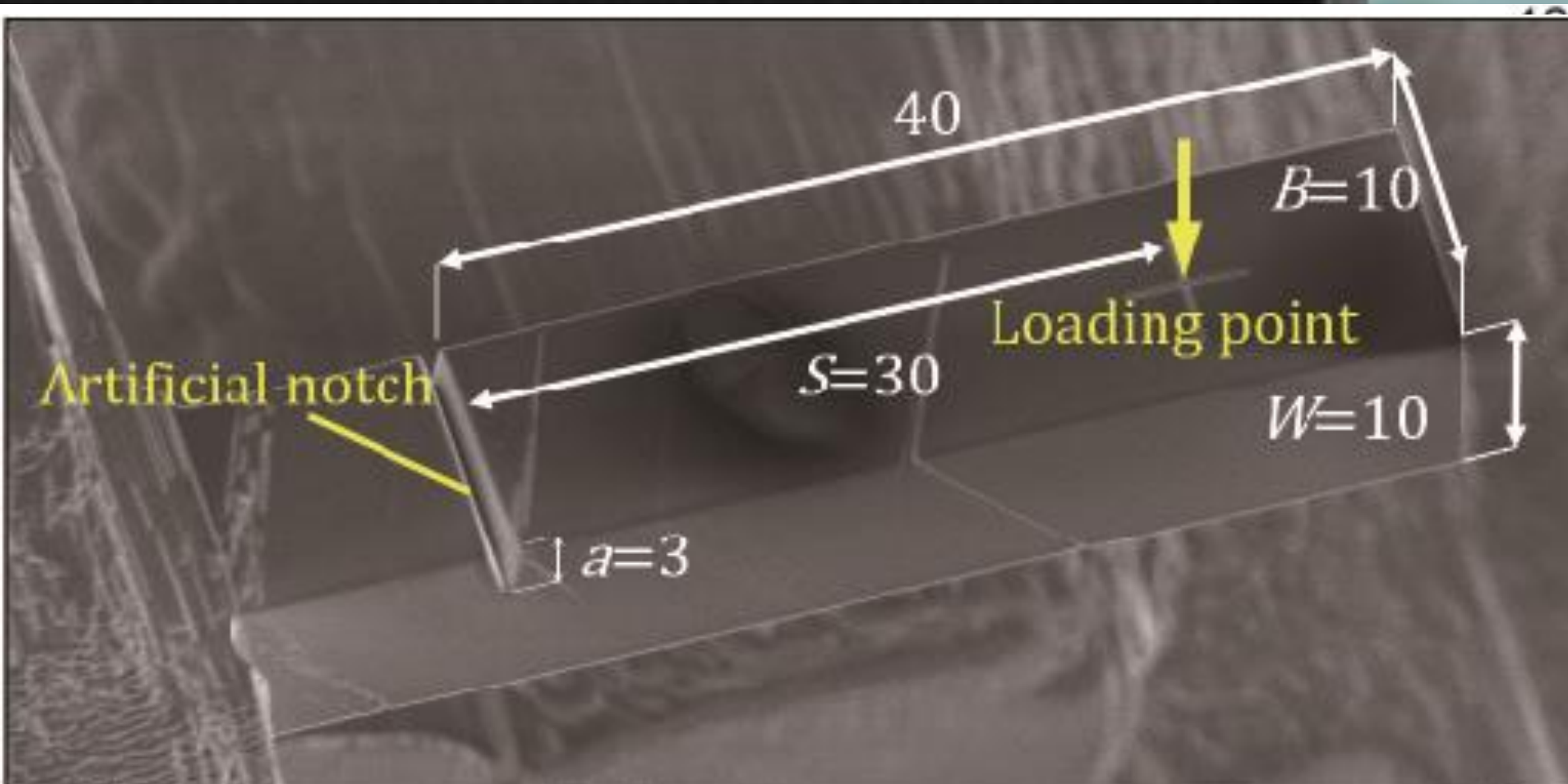
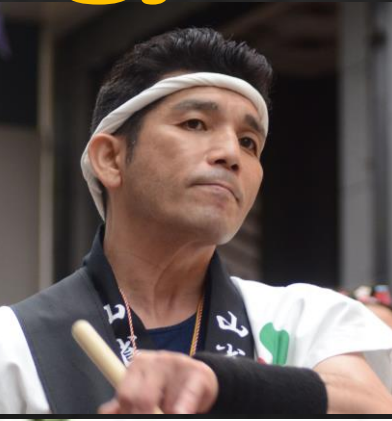


Department of Mechanical and Aerospace Engineering,  
Environmental and Energy Engineering

Graduate School of Environmental Studies,  
Earth Exploitation Environmental Studies

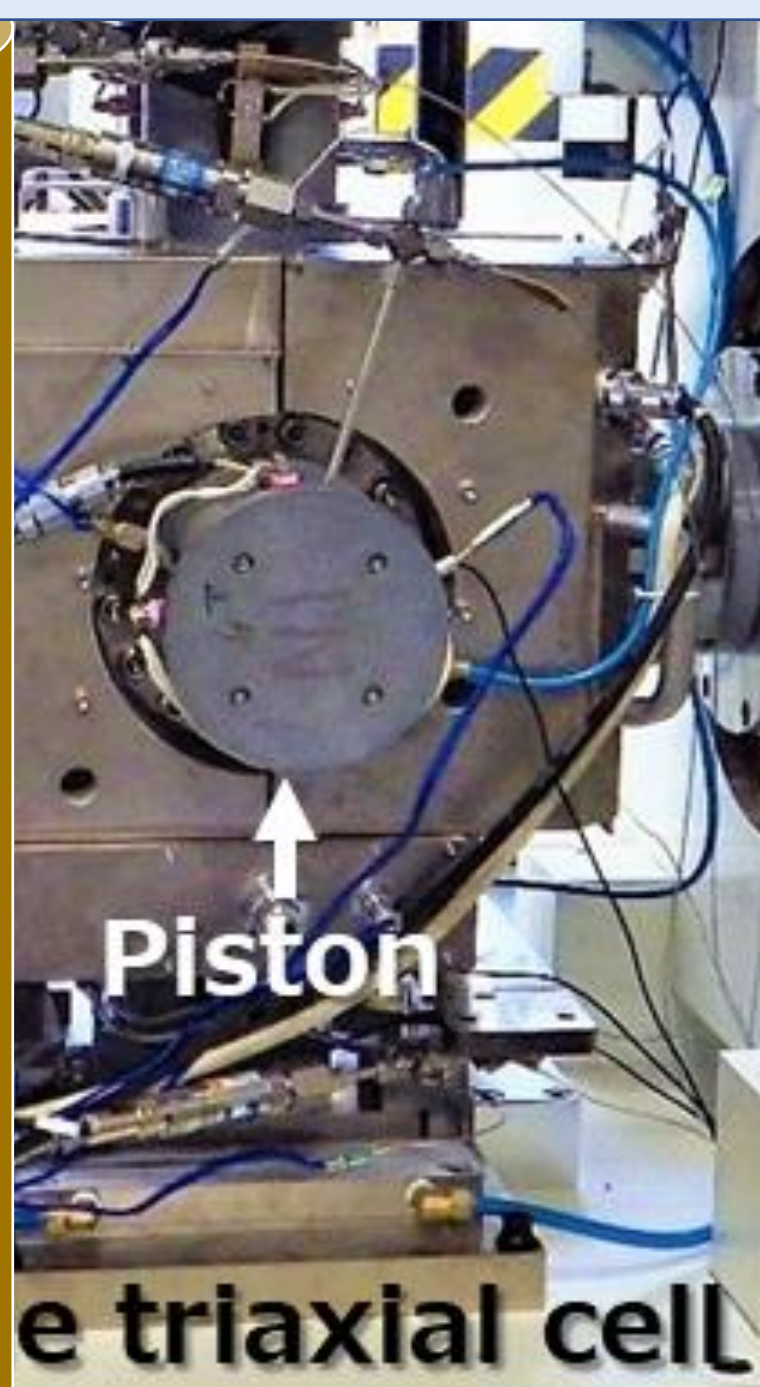
Opening new doors in geoenvironment and energy technology

Sakaguchi Lab.

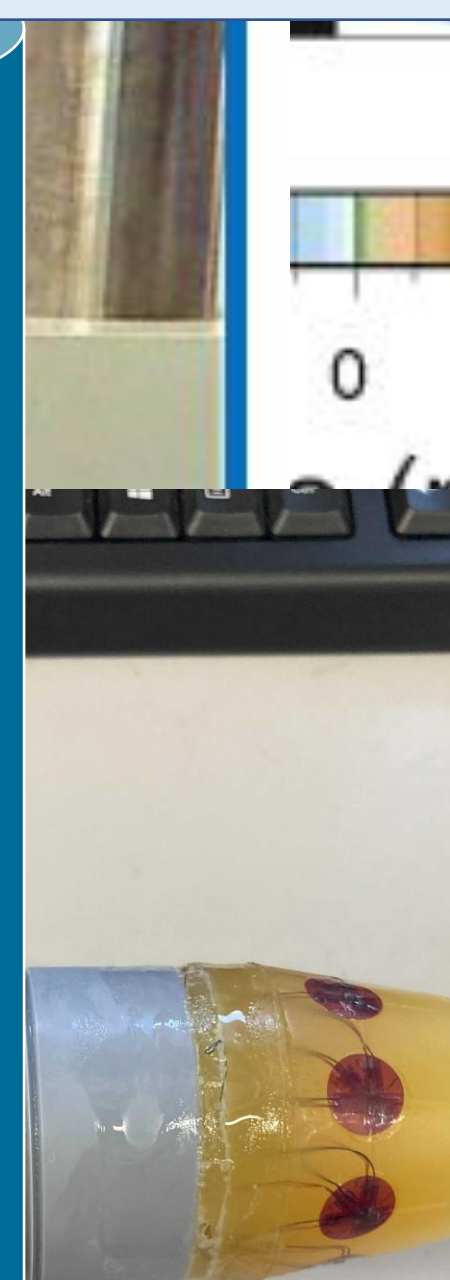


- Effective use of supercritical resources
- Carbon recycling geothermal power generation using  $\text{CO}_2$
- High accuracy prediction of long- to ultra-long-term stability of underground structures
- New method of earthquake observation focusing on shallow crustal stress

Geothermal



Crustal Stress



Earthquake



3大柱と看板(柱上)の耐震補強よしッ!

The three main pillars of research in the  
Sakaguchi Lab.