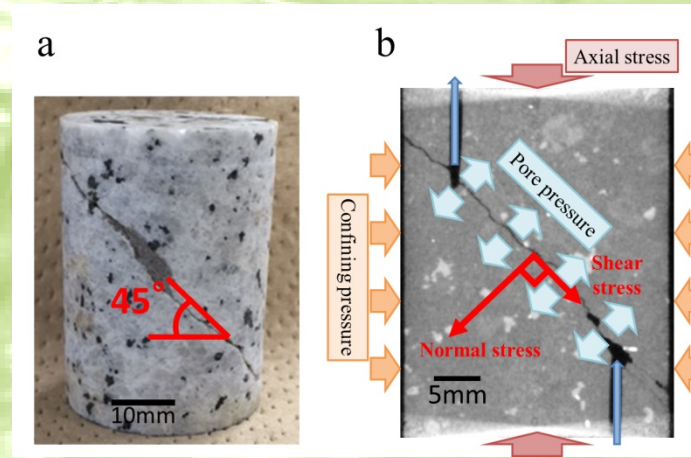
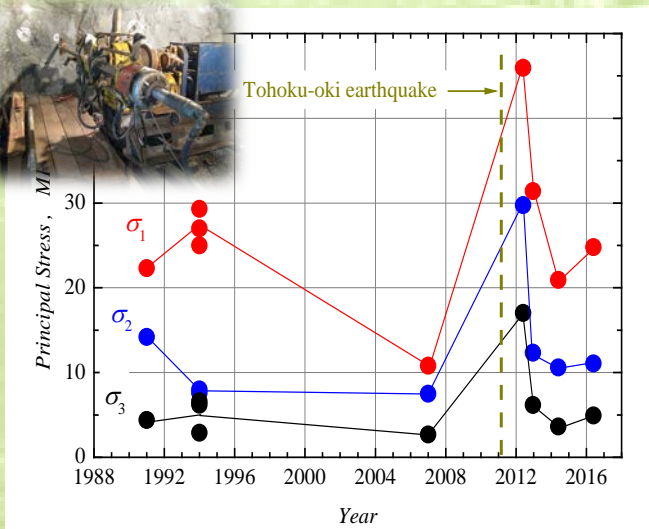




Sakaguchi Lab.

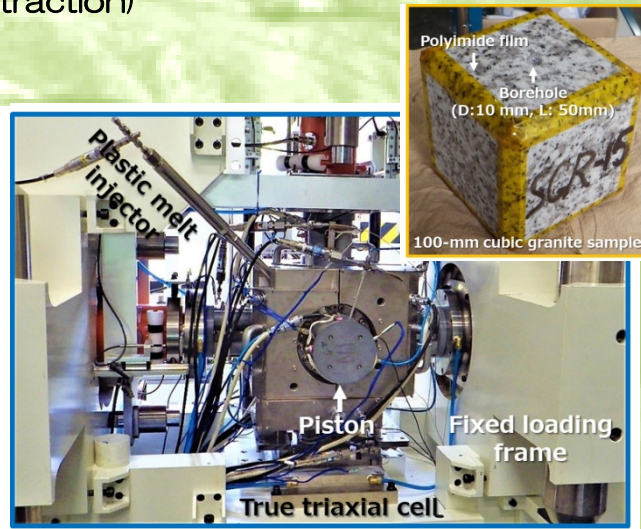
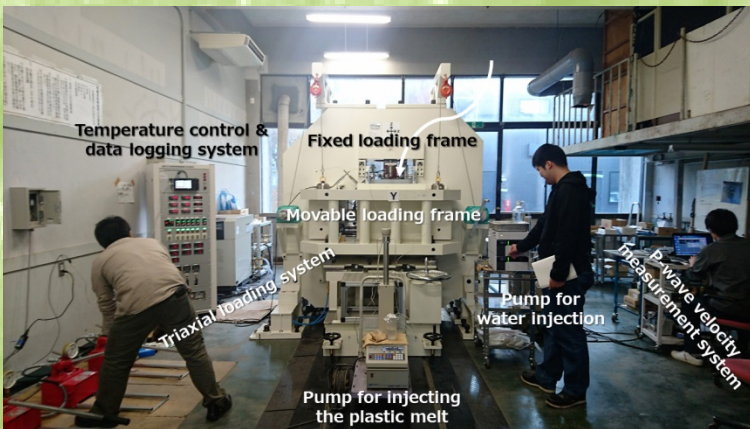
Assoc. Prof. K. Sakaguchi

Toward Advanced Environmental Geomechanics and Energy Technology



Study on crustal stress fields at shallow depth, which is a several hundred meter below surface, before and after huge earthquake for prediction of earthquakes.

Injection-induced slip characteristics of a rock fracture under high temperatures. (Geothermal energy extraction)



Study on mechanical and hydraulic characteristics of rock and fracture under high temperature (300 - 500°C) and high pressure (50 MPa - 100 MPa) for new concept geothermal reservoir (Geothermal energy extraction)