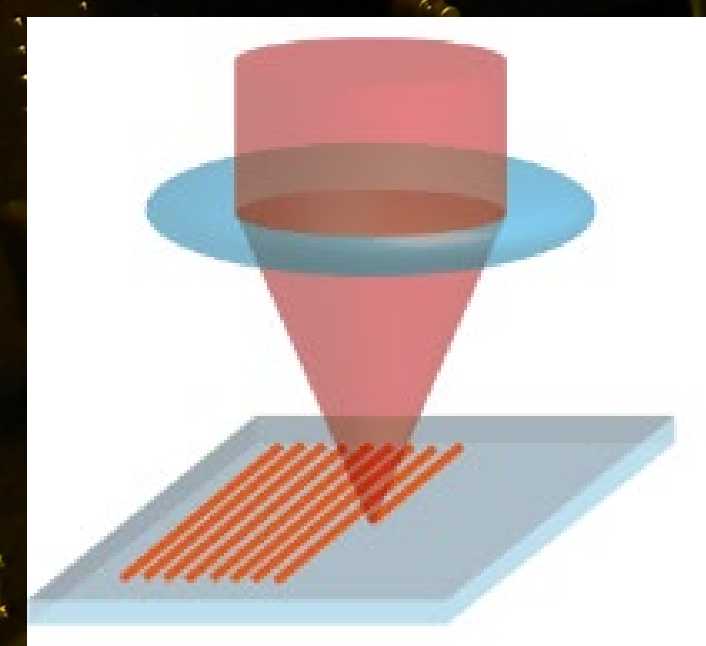
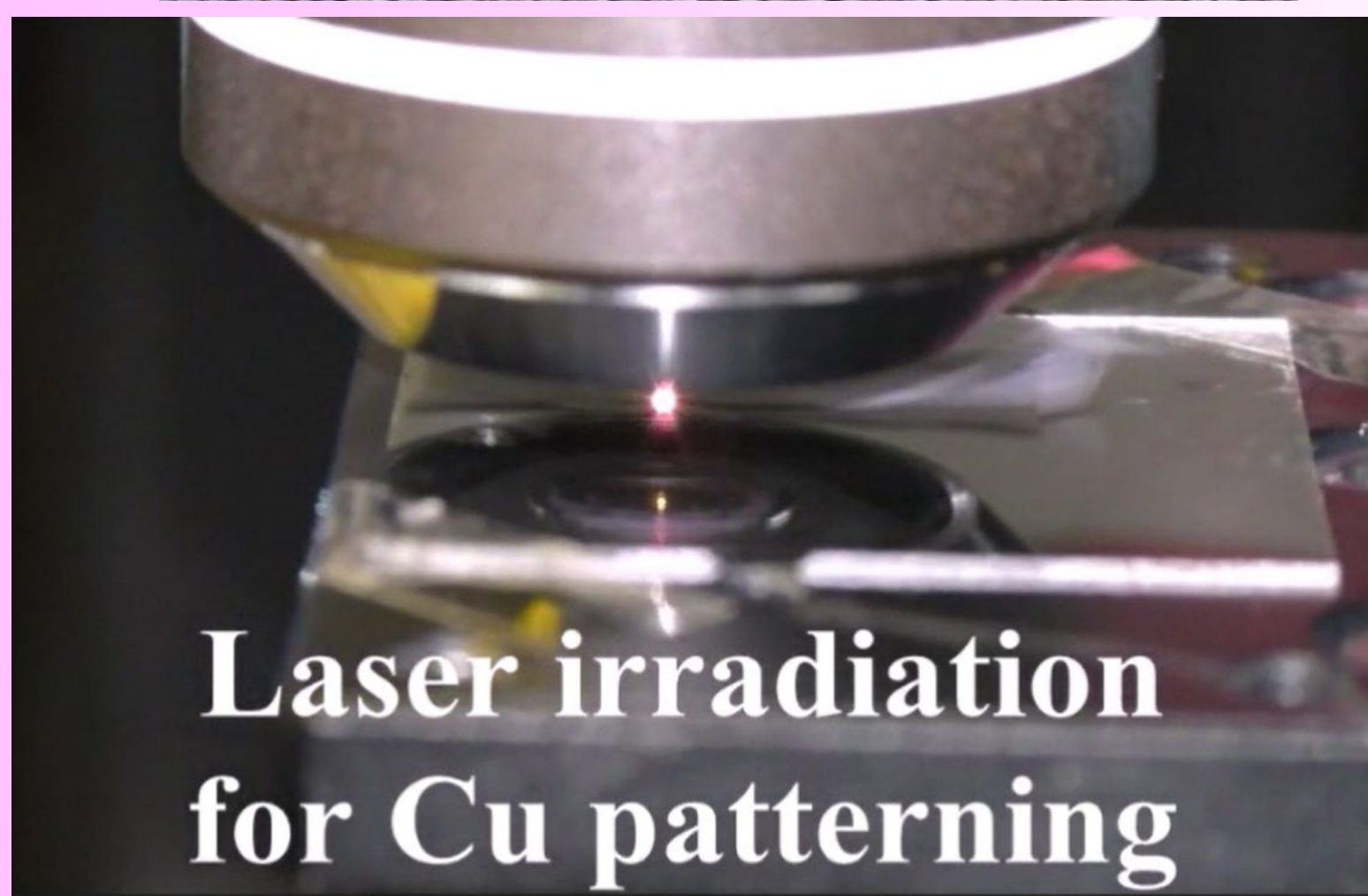
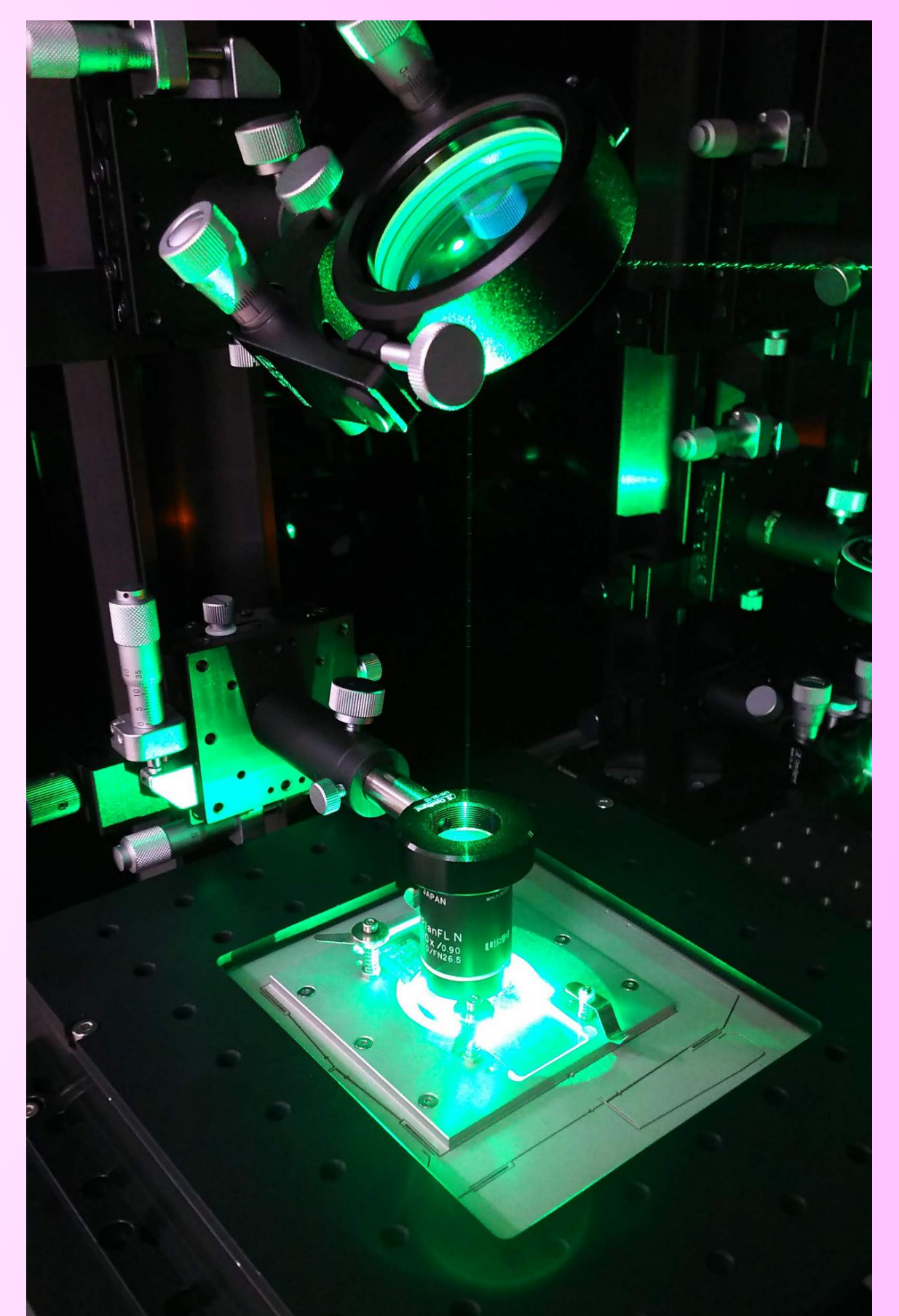
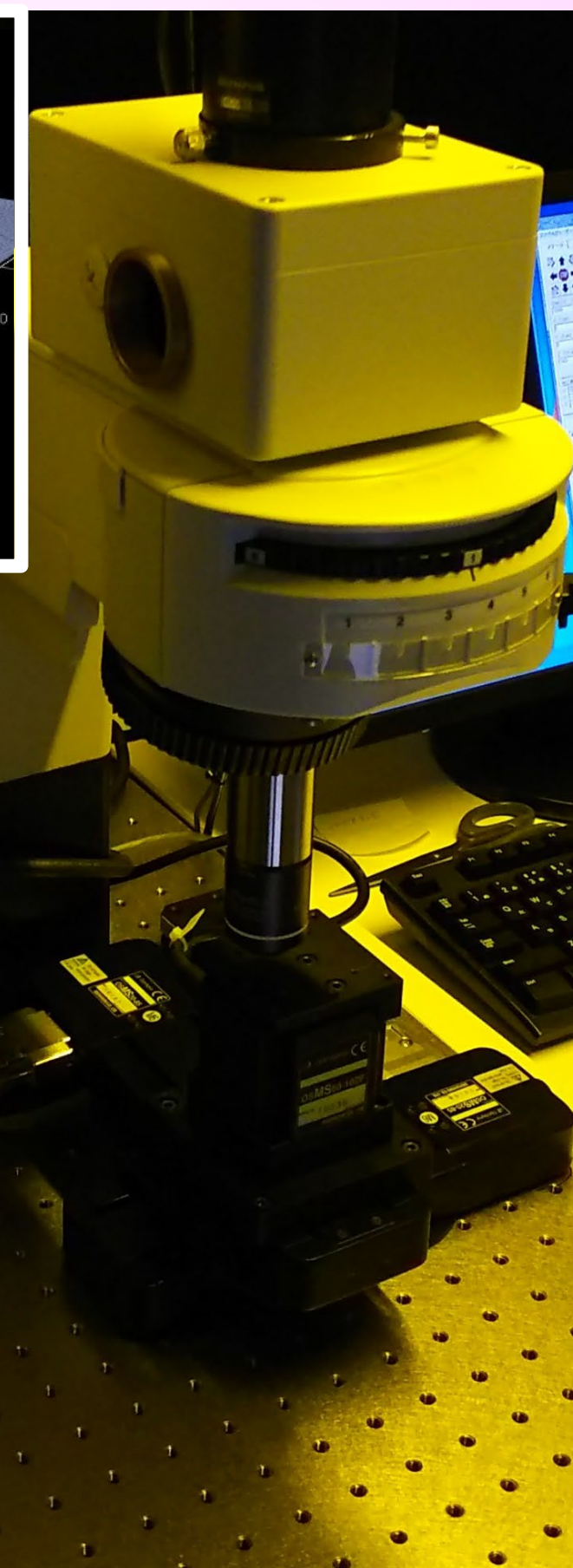
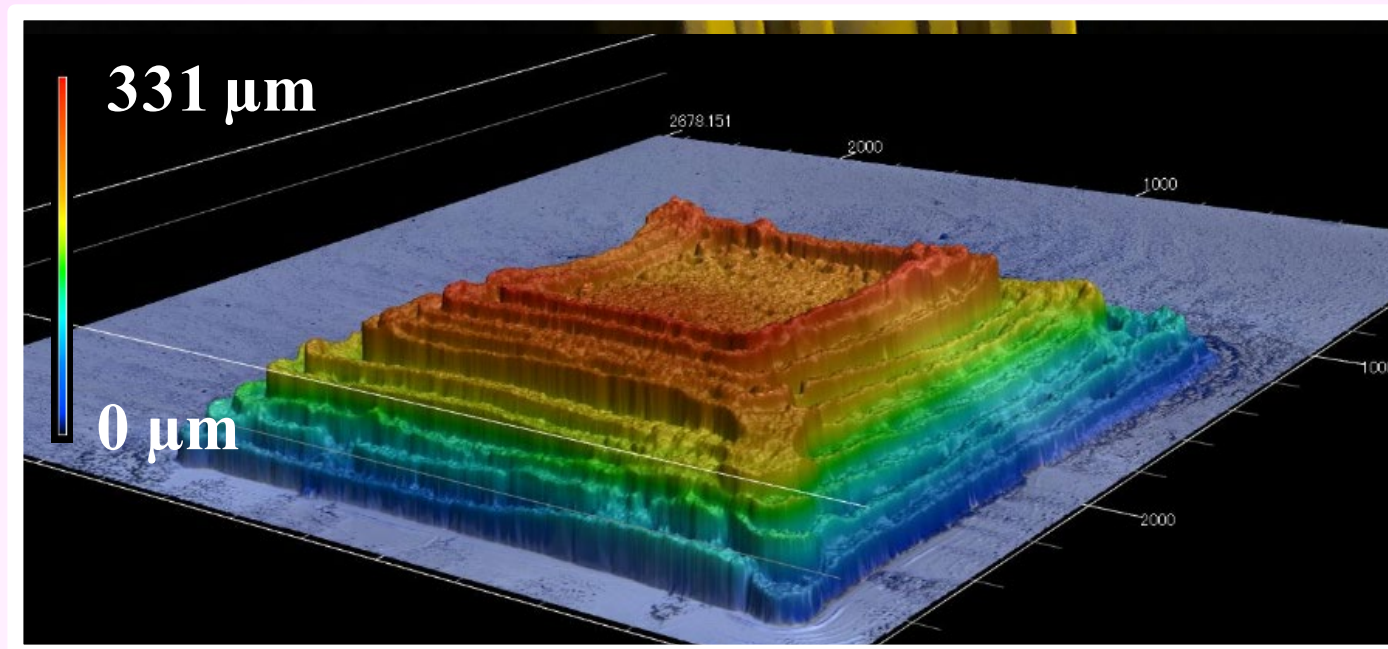
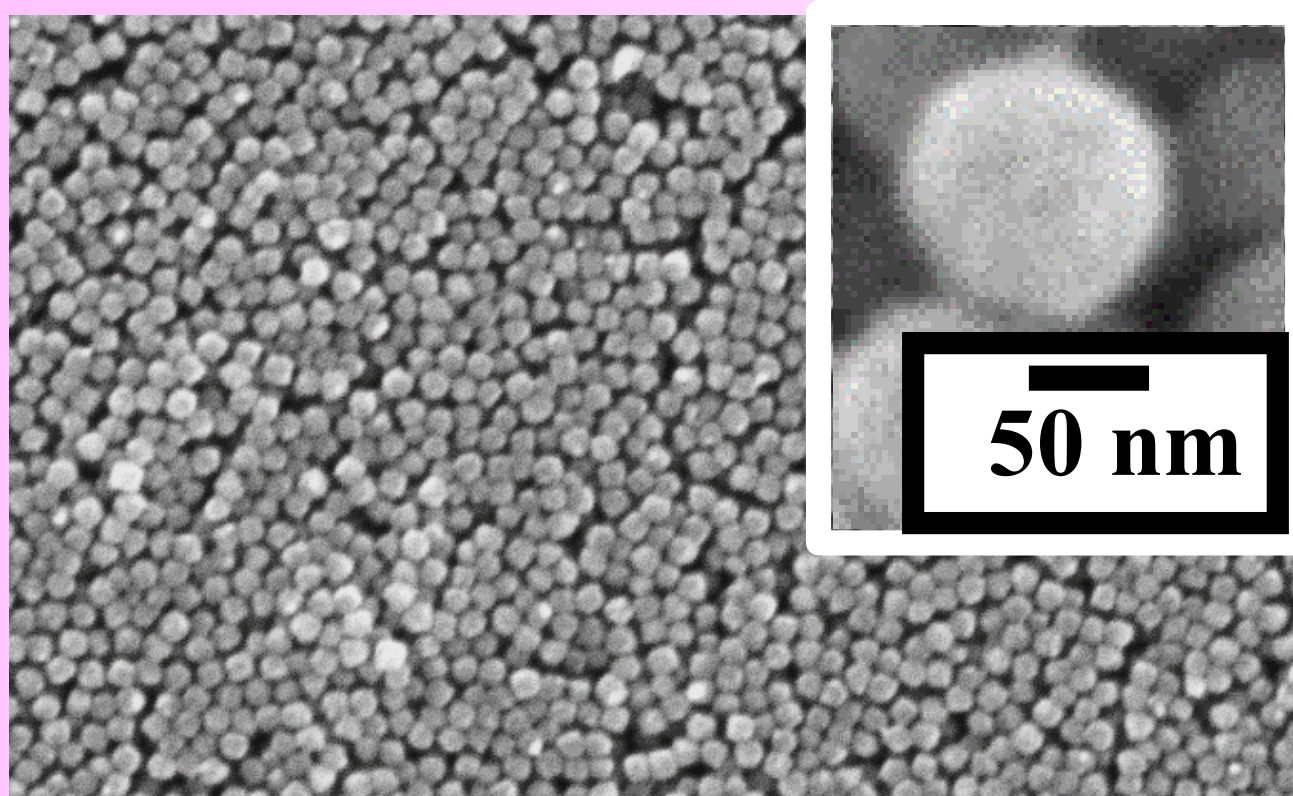


Department of Finemechanics School of Engineering, Tohoku University Mizoshiri Laboratory



Our laboratory focuses on micro- and nano-scale fabrication technologies using **laser light**. We also work on developing various microdevices by applying these fabrication methods. Through precision fabrication, we create **innovative products!**

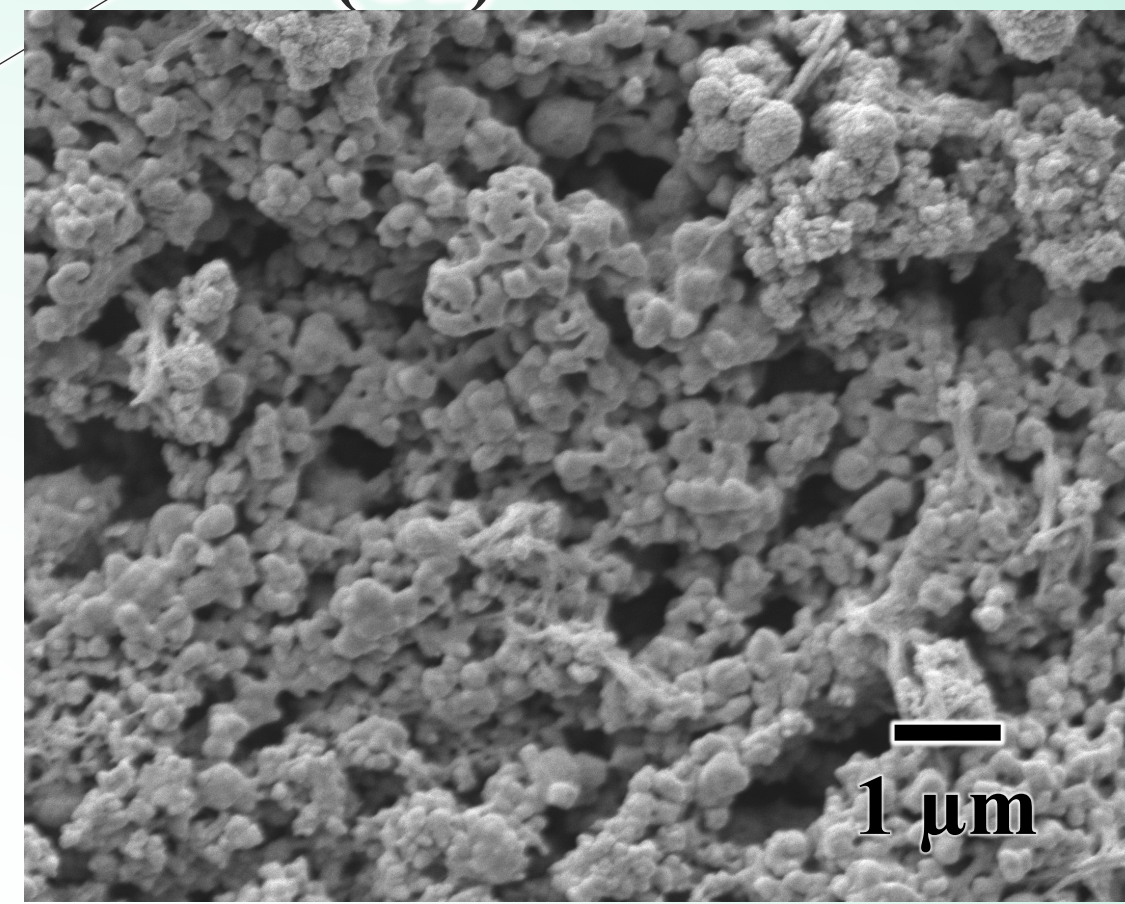
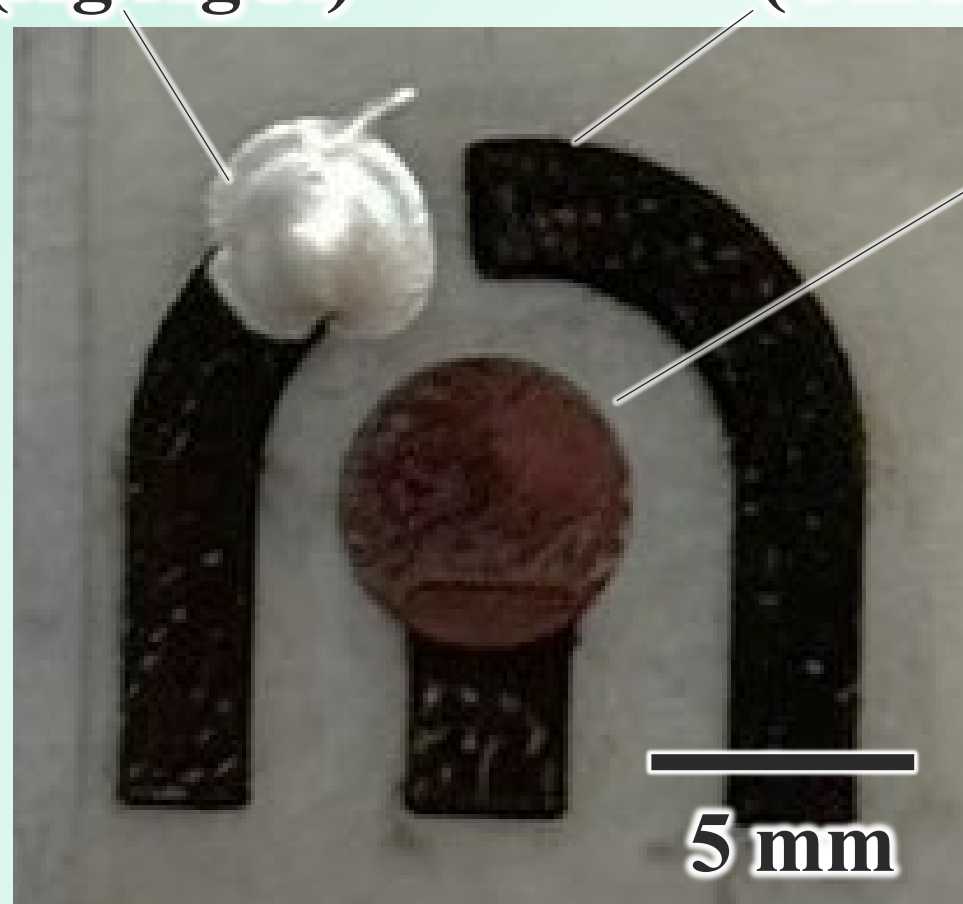
Laser microfabrication



Laser material interaction

Fabrication of microdevices

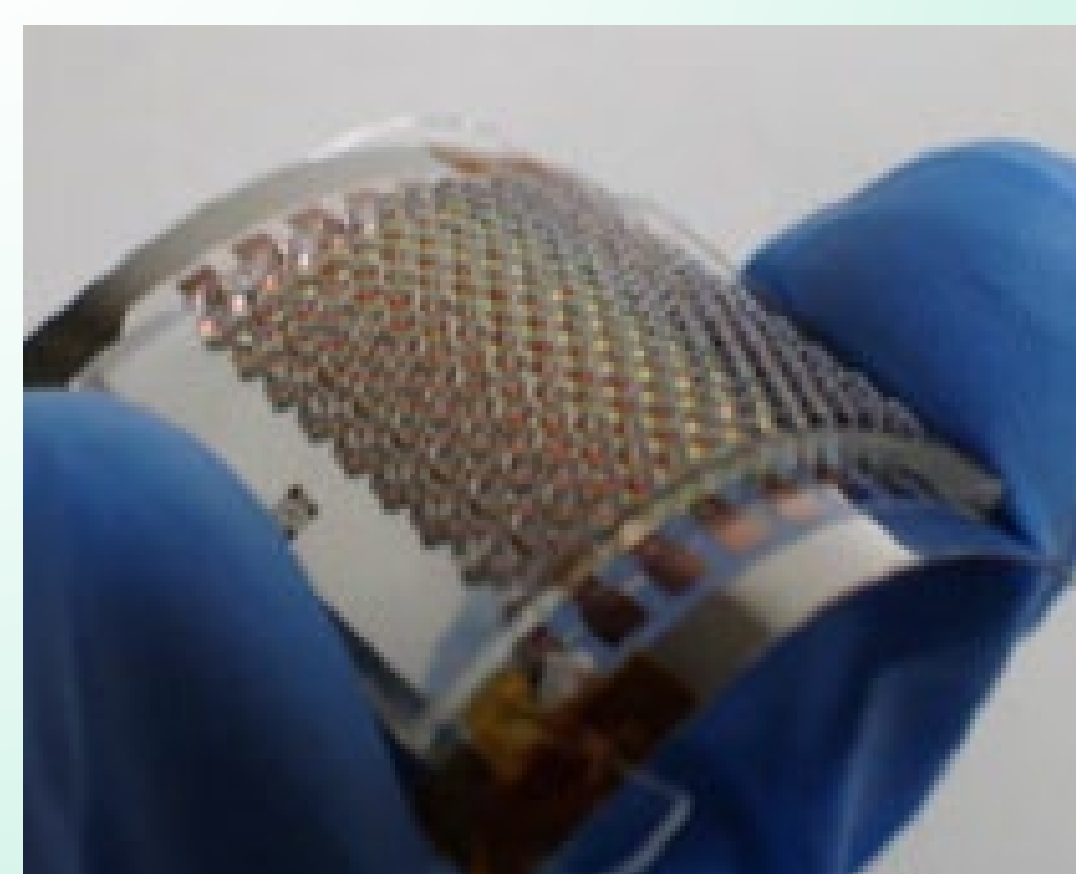
Reference electrode (Ag/AgCl) Counter electrode (Carbon) Working electrode (Cu)



D-glucose sensor



Ni-based micro gear



Thin-film thermoelectric device

Clarification of transient phenomena

