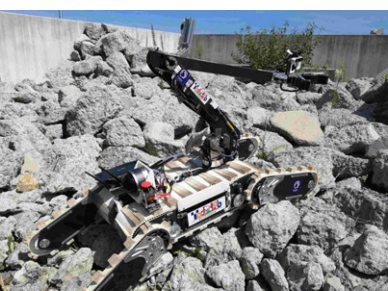


Tough Robotics Lab

Tough Cyberphysical AI



At the Ohno, Kojima, Bezerra, and Tsige / Okada Laboratory, we conduct research on robotics and AI for disaster response and infrastructure inspection, communication technologies for humans and canines, probabilistic robotics, and foundation models. By integrating RT (robot technology) with various domains, we aim to contribute to the realization of a safe, secure, and enriched society.



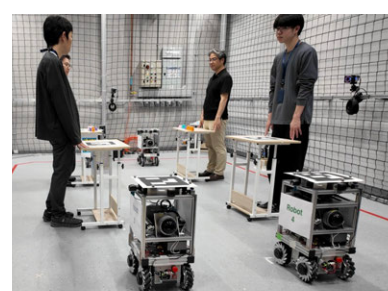
Disaster response crawler robot: Onix



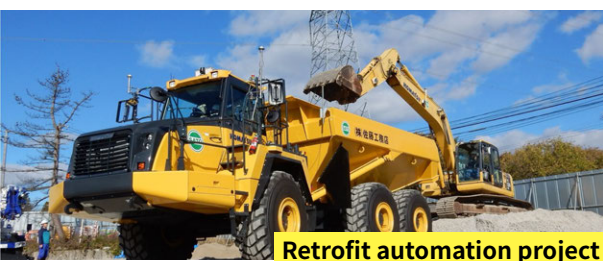
Passive rotating spherical shell drone for infrastructure inspection



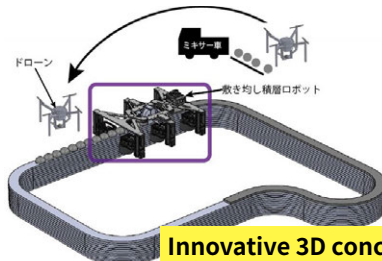
Autonomous navigation of culvert and tunnel inspection robots



Human-robot collaboration: Transformable Production



Retrofit automation project for construction machinery



Innovative 3D concrete printer utilizing robot technology



Cyber Rescue Canine



Automatic Firefighting Robot System: Scrum Force

And more.

- Deterioration survey of aging concrete buildings on Gunkanjima
- Foundation models, AI, and probabilistic robotics
- Collar-type feeder for dogs

Come join us and change the world !

Prof. Kazunori Ohno



Ohno, Kojima, Bezerra, and Tsige / Okada Laboratory

101 Rare Metal Building, 468-1 Aoba, Aramaki,
Aoba-ku, Sendai-shi, Miyagi-ken, 980-0845

TEL: 022-752-2165 / ✉ faculty@tr.is.tohoku.ac.jp

For more information, visit our lab web!

<https://tr.is.tohoku.ac.jp/>

